



Ratray Road, Brixton, SW2

4 bedroom house for sale

£1,050,000

Freehold

Property Details

A four double bedroom Victorian family home on a popular residential road, a short stroll from central Brixton, Brockwell Park and Herne Hill. This period property comprises a bright double aspect reception and dining room a country-style kitchen with utility room, four double bedrooms, a modern bathroom with WC and a private rear garden. The property benefits from considerable loft space and a cellar offers storage options. There is also potential to extend, subject to the necessary permissions, into the side return or up into the loft.

Features

- Four double bedrooms
- Victorian terraced house
- Substantial loft-space
- Development potential
- Sought-after location
- Close to Brockwell Park
- Freehold

Council tax band E EPC rating D (59)





Ratray Road, Brixton, SW2

K

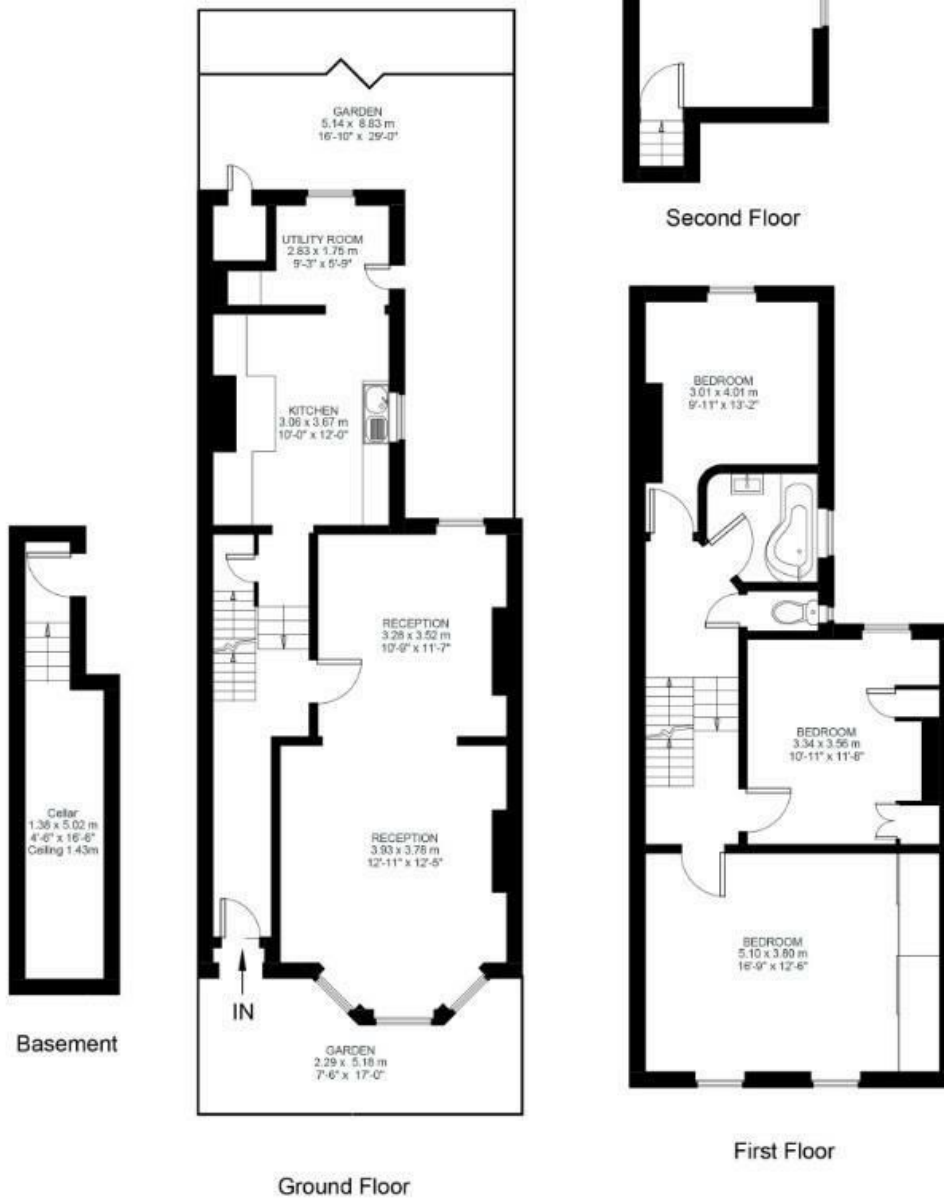
4 Bed house

Approx internal area:

1517 sqft 141 sqm

While we do try our very best, floor plans are produced as a guide only and we take no responsibility for the precise accuracy with which any property is represented

Ratray Road



Ratray Road, Brixton, SW2

